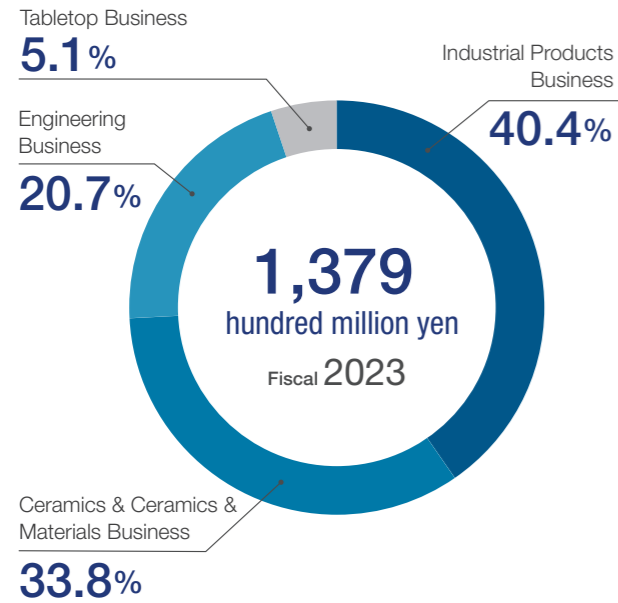
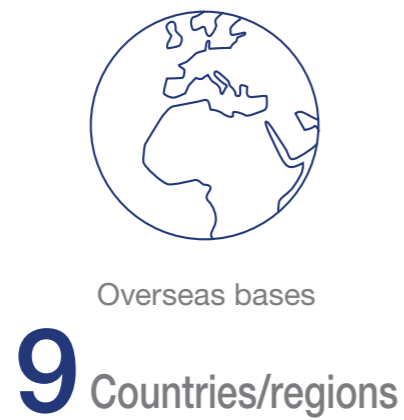
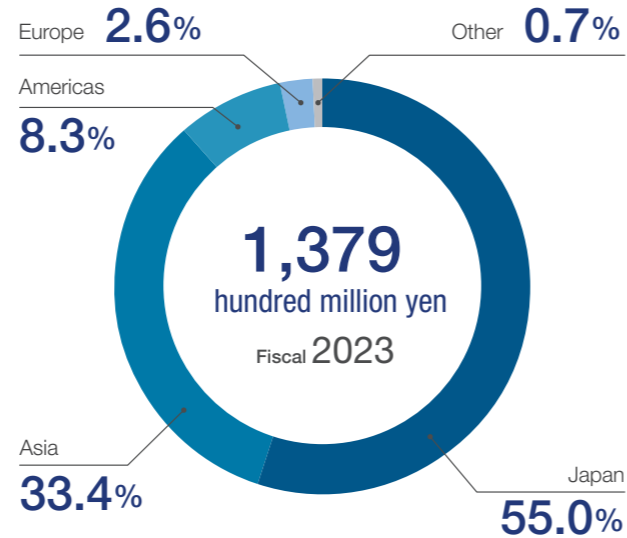


About the Noritake Group

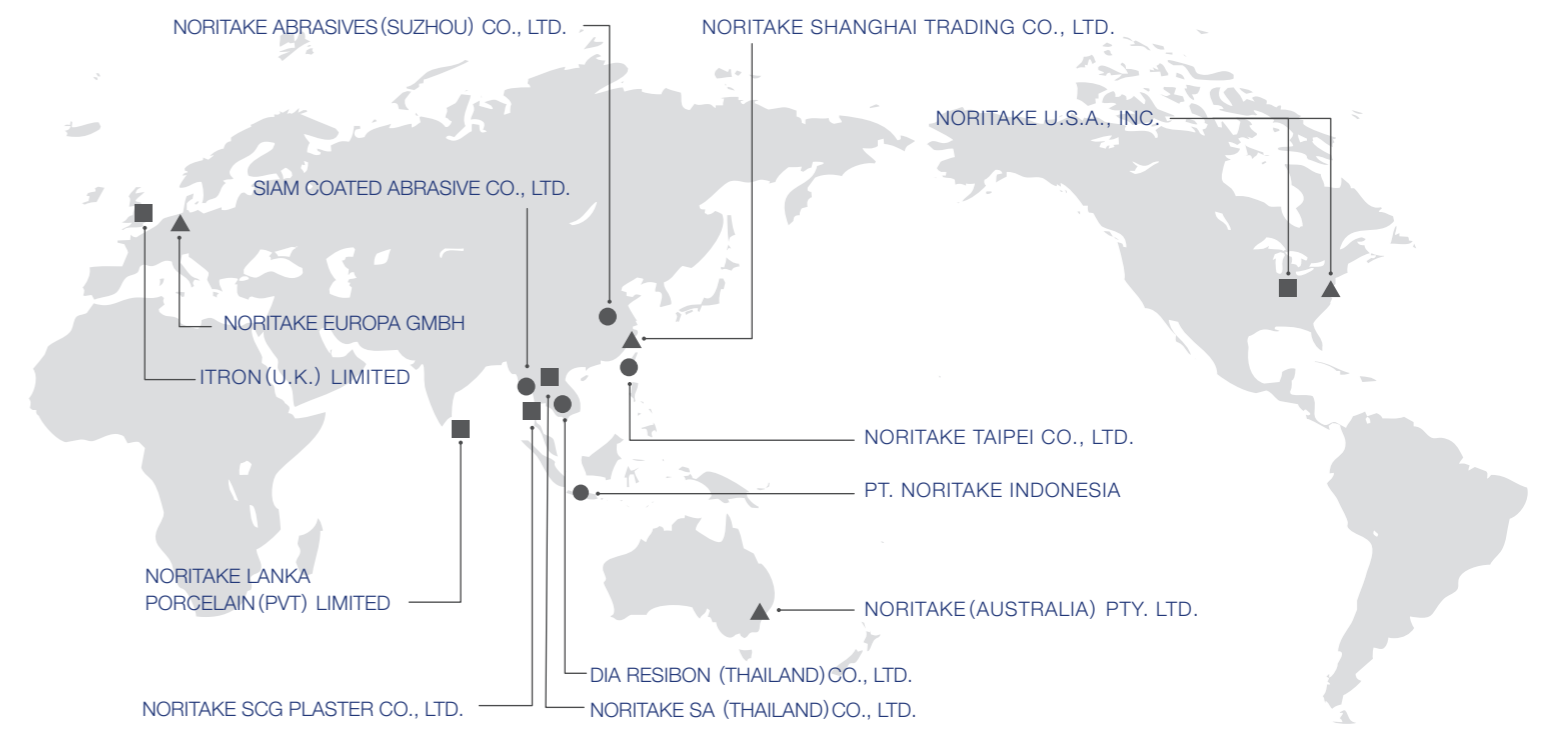
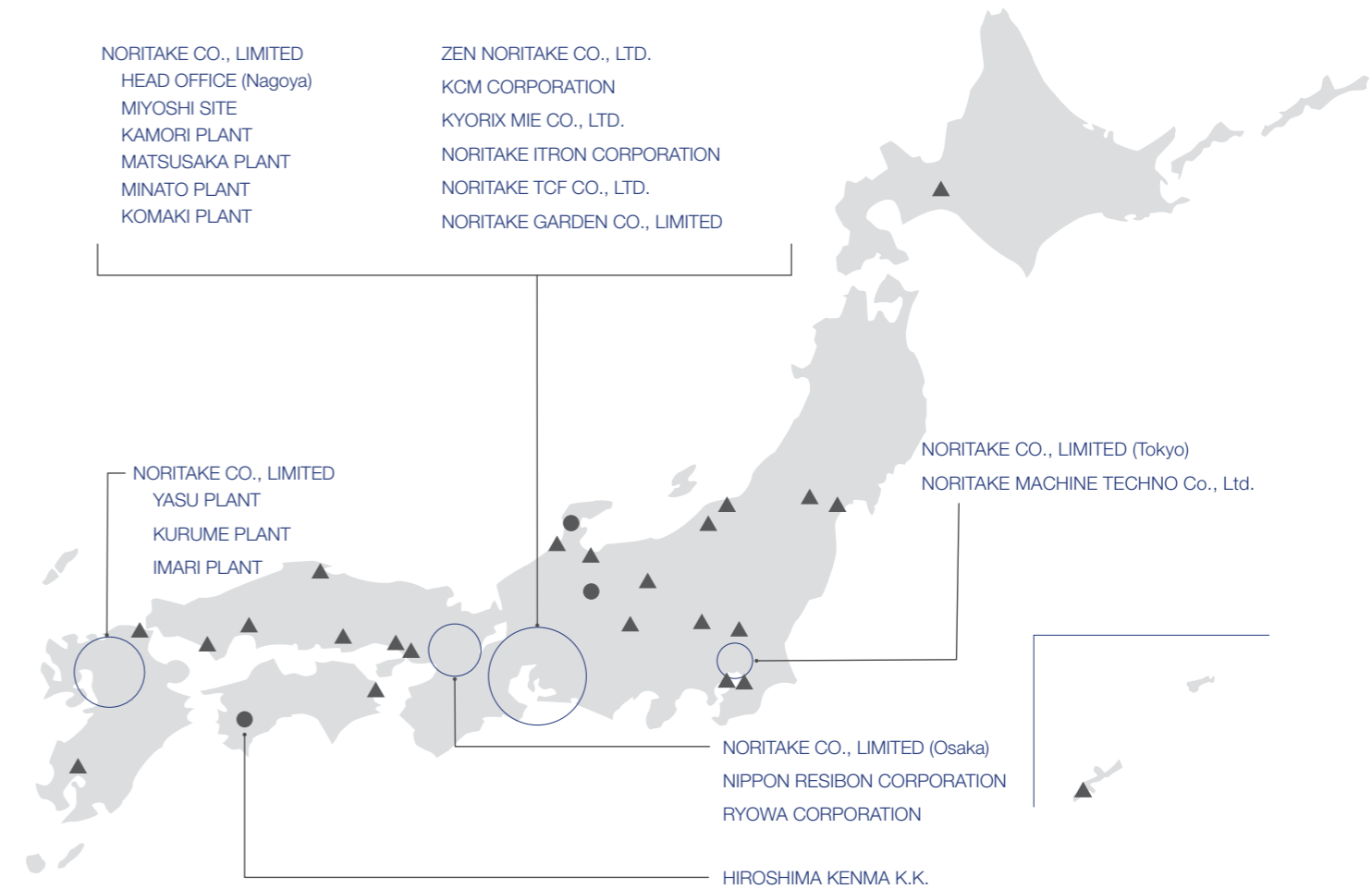
Net sales composition ratio by segment



Net sales composition ratio by area



● Manufacturing Bases ▲ Sales Bases ■ Manufacturing Bases/Sales Bases



*The number of consolidated subsidiaries increased to 23 from April 18, 2024, due to the acquisition of shares of SIAM COATED ABRASIVE CO., LTD. (As of March 31, 2024)