

Noritake

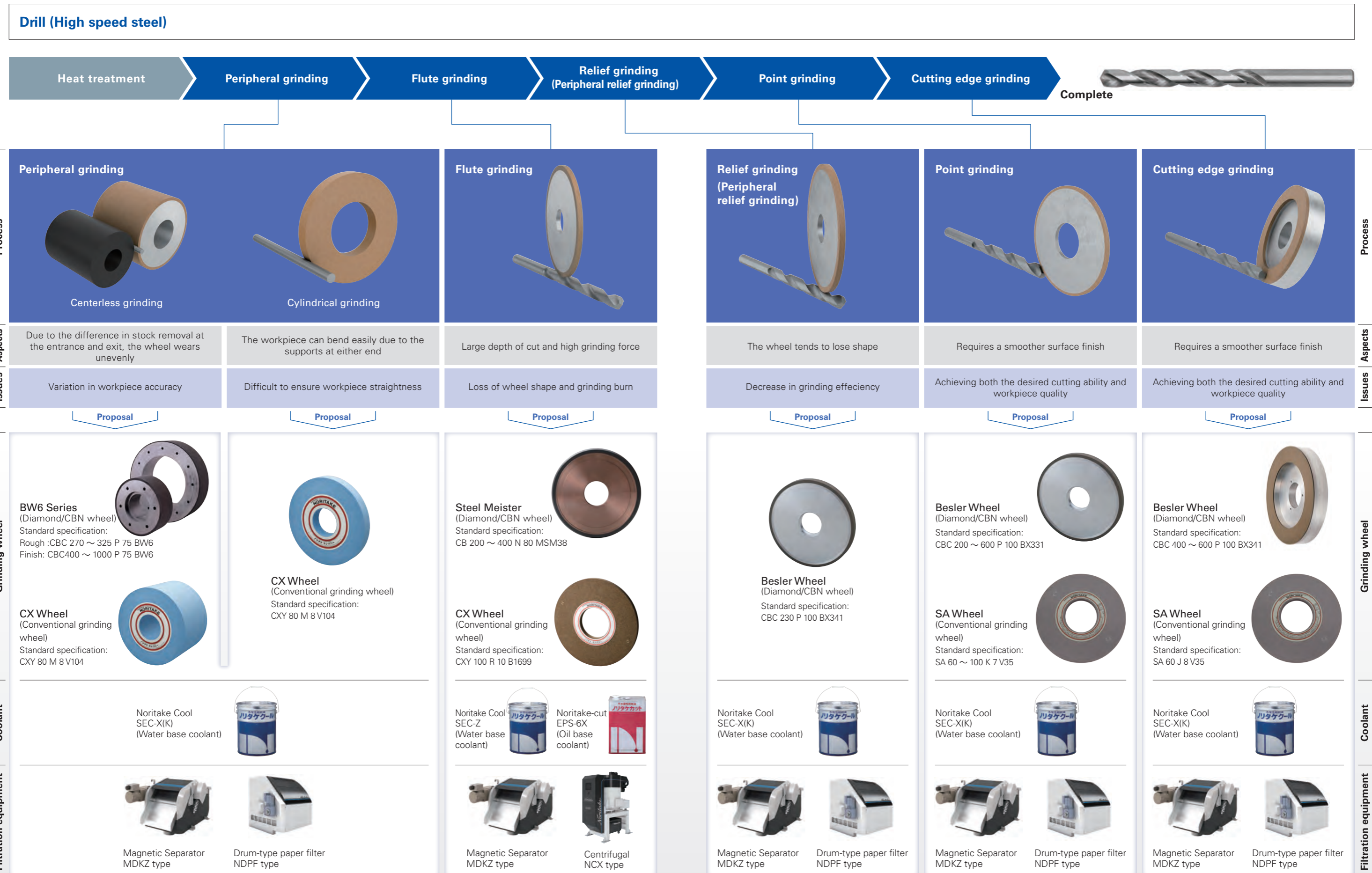
Grinding Solutions For Cutting Tool Manufacturing Process



» Issues and Proposal for Improvement of Cutting Tool Manufacturing Process



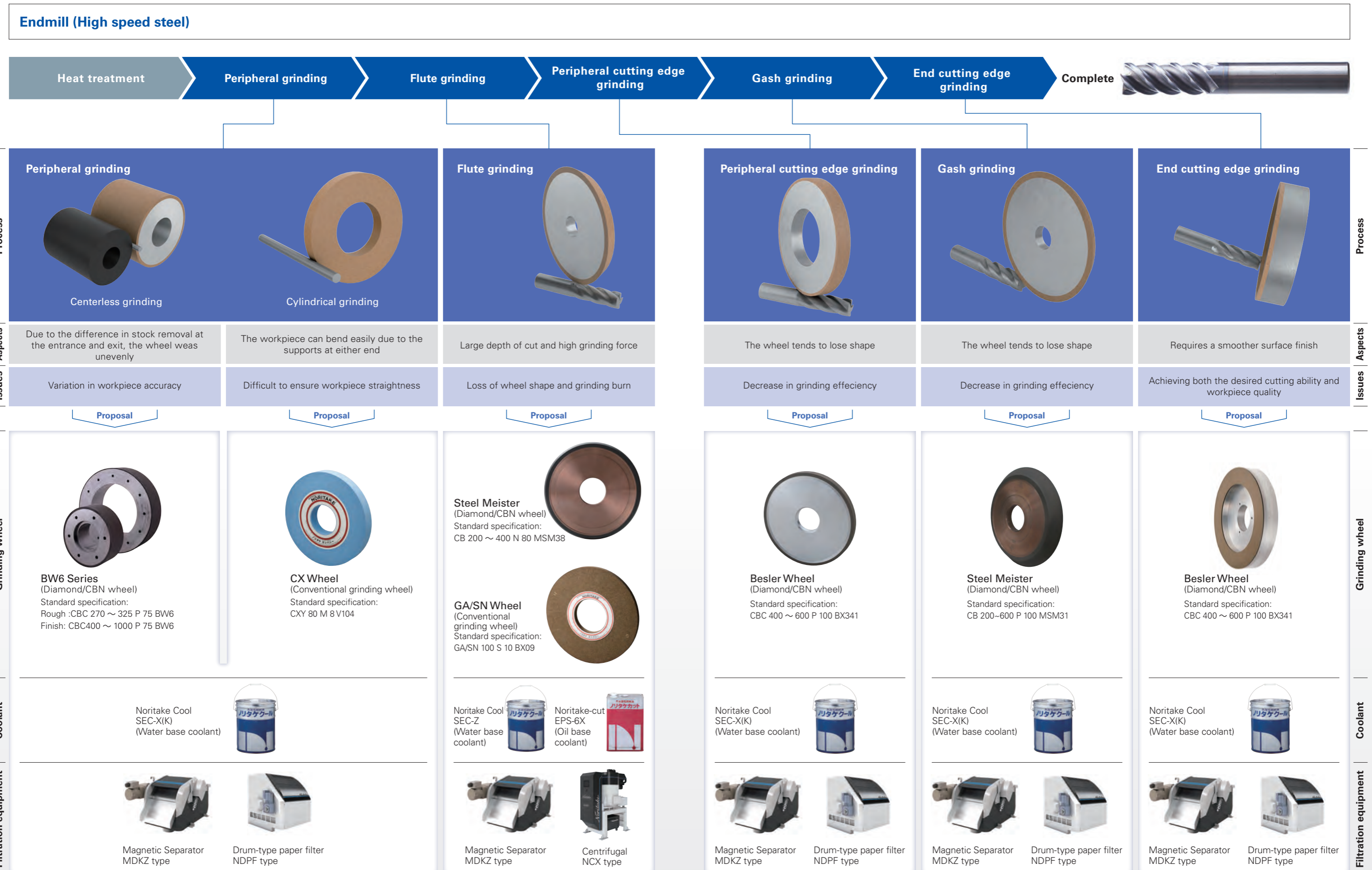
Issues and Proposal for Improvement of Cutting Tool Manufacturing Process



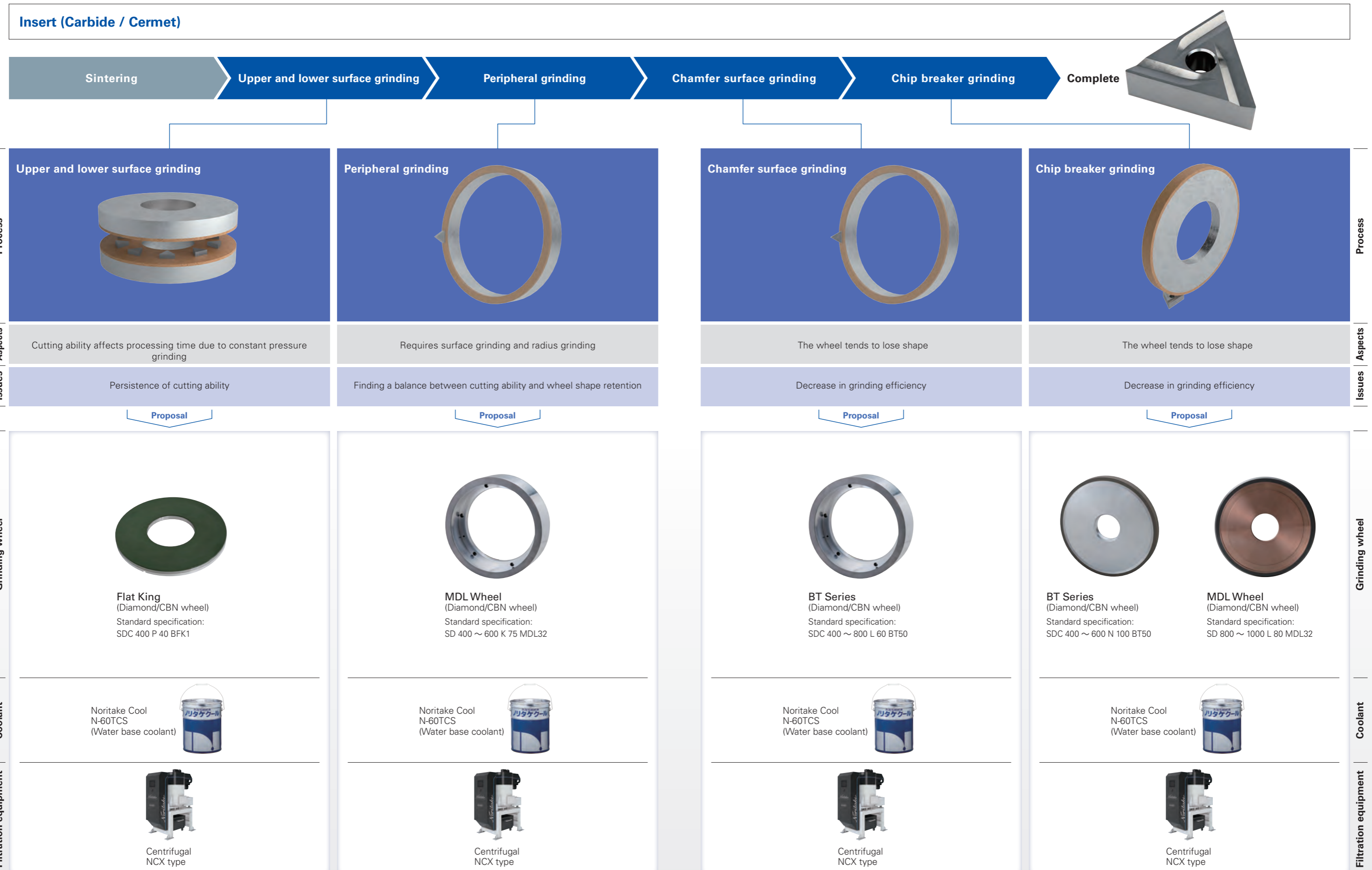
» Issues and Proposal for Improvement of Cutting Tool Manufacturing Process



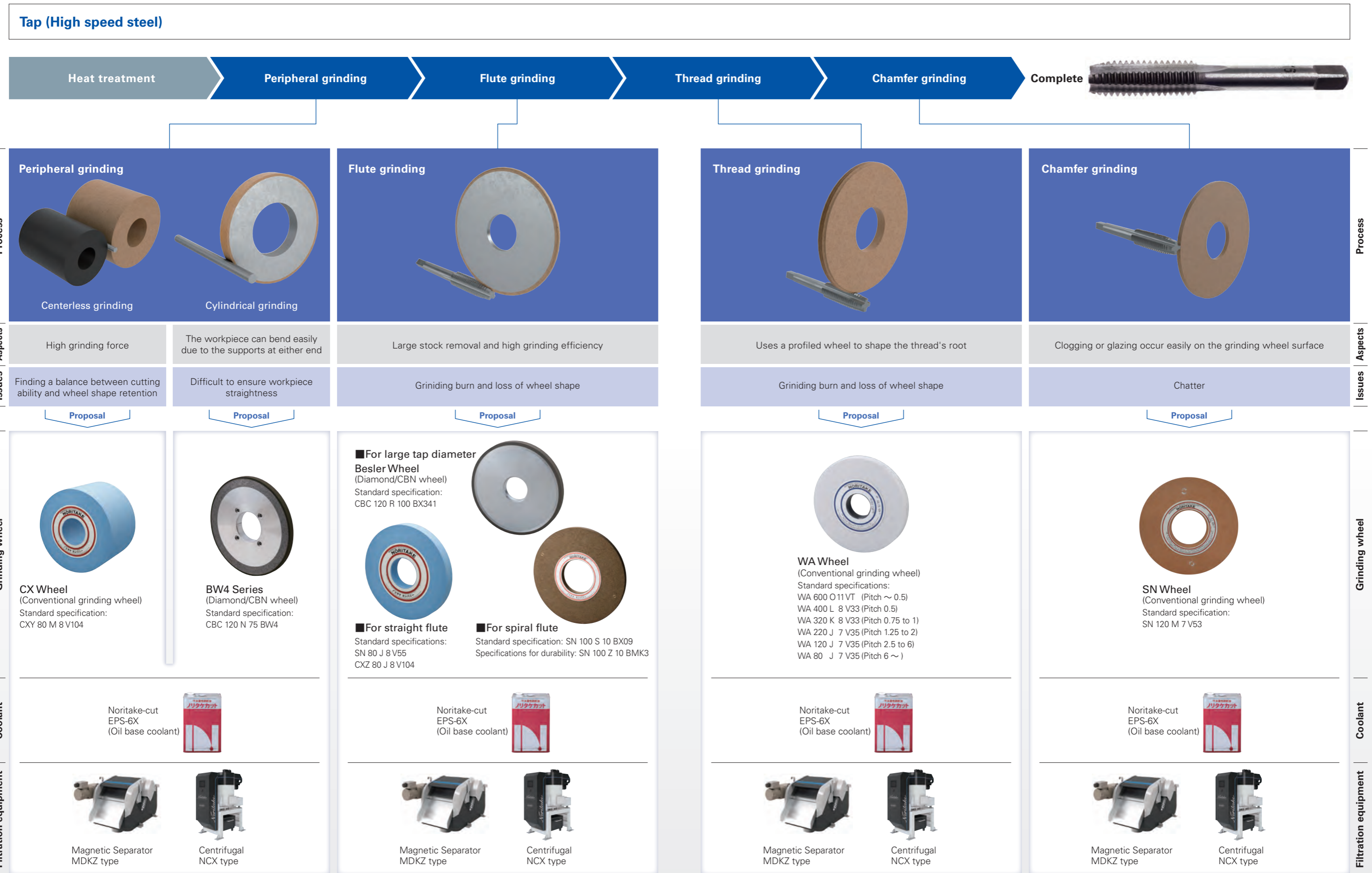
» Issues and Proposal for Improvement of Cutting Tool Manufacturing Process



» Issues and Proposal for Improvement of Cutting Tool Manufacturing Process



» Issues and Proposal for Improvement of Cutting Tool Manufacturing Process




Proposal

WA Wheel
(Conventional grinding wheel)
Standard specifications:
WA 600 O 11 VT (Pitch ~ 0.5)
WA 400 L 8 V33 (Pitch 0.5)
WA 320 K 8 V33 (Pitch 0.75 to 1)
WA 220 J 7 V35 (Pitch 1.25 to 2)
WA 120 J 7 V35 (Pitch 2.5 to 6)
WA 80 J 7 V35 (Pitch 6 ~)

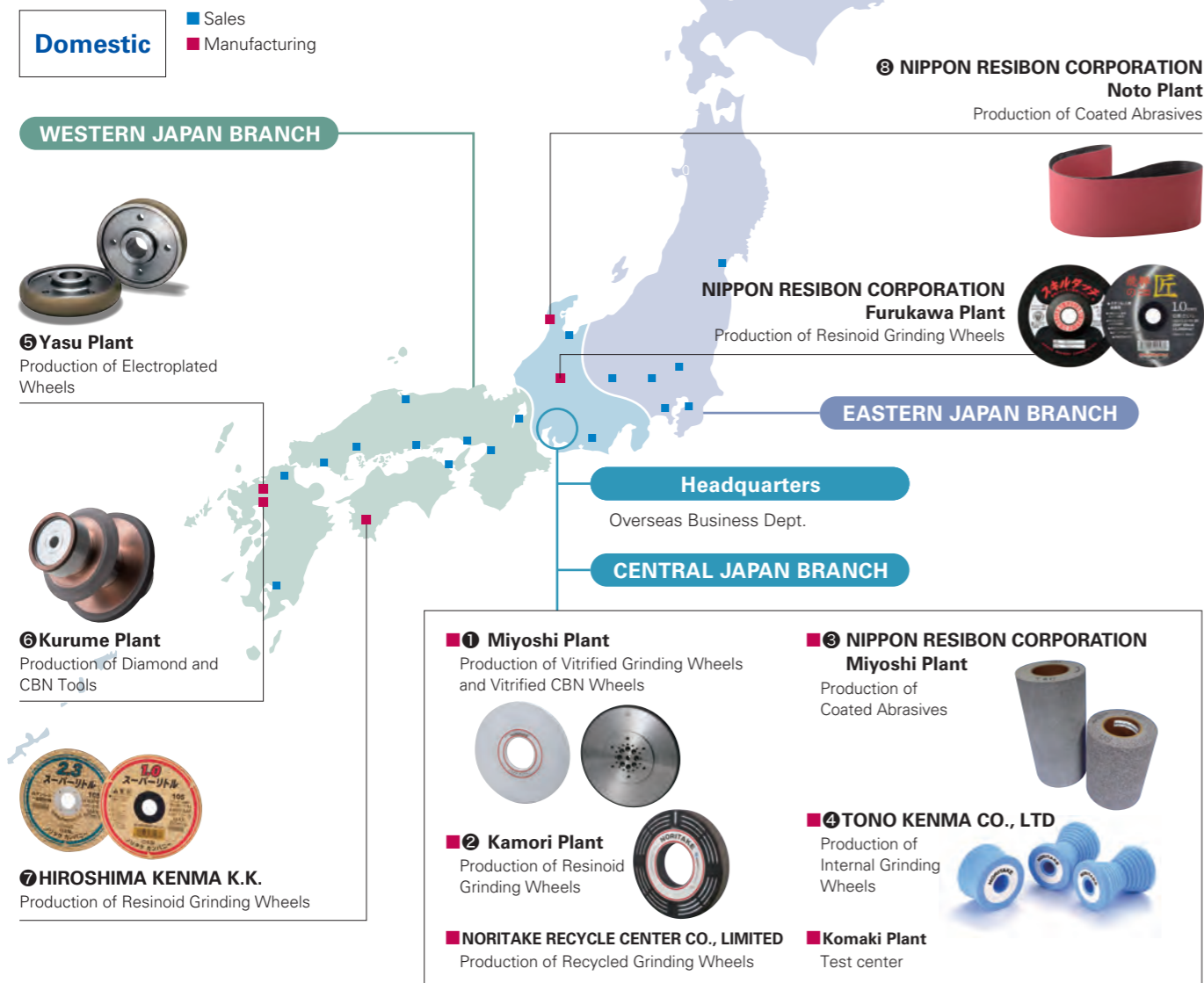


Proposal

SN Wheel
(Conventional grinding wheel)
Standard specification:
SN 120 M 7 V53

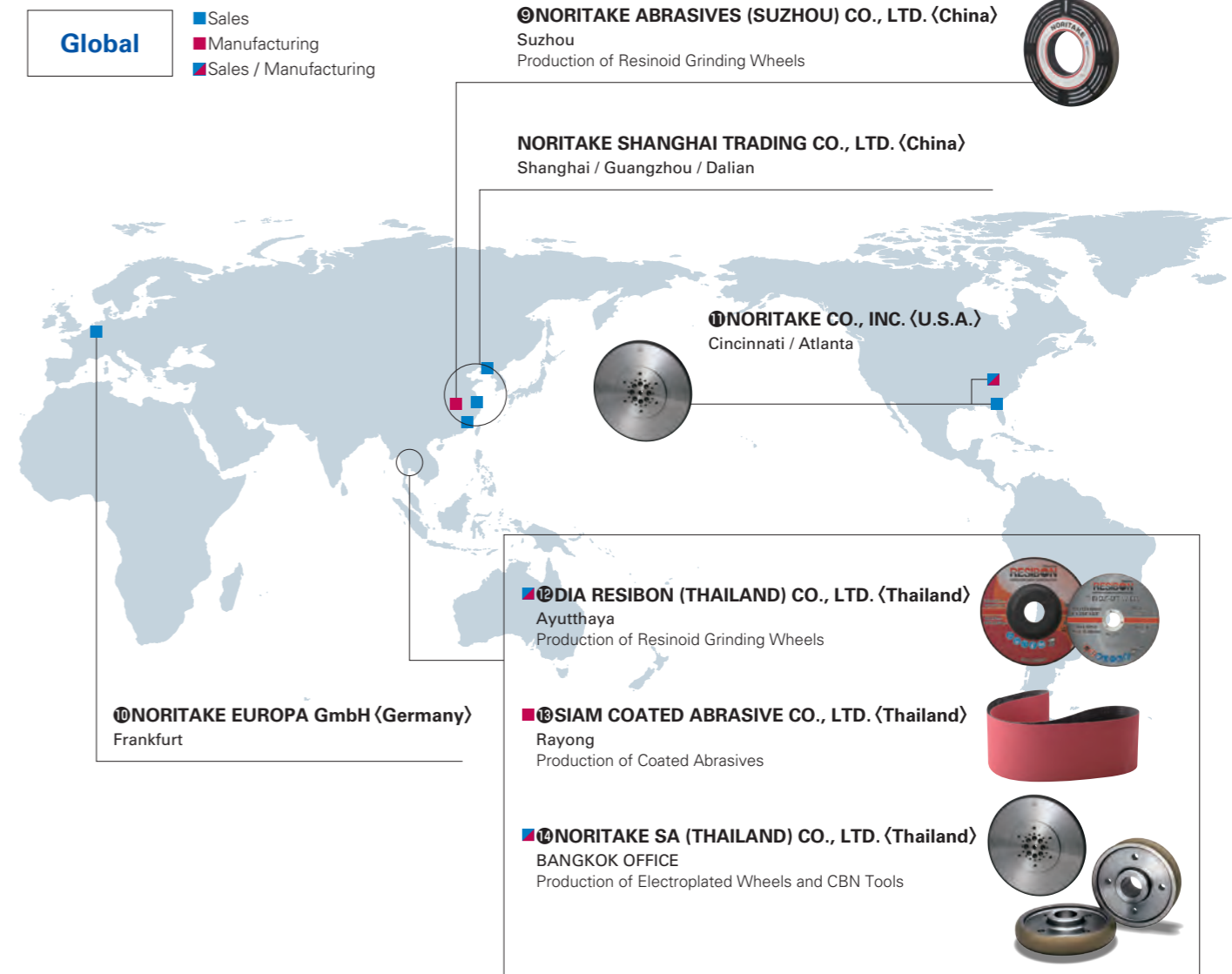


» NORITAKE CO., LIMITED Industrial Products Group Network



ISO certification acquisition status

ISO9001: All NORITAKE Manufacturing Bases, NIPPON RESIBON
ISO14001: NORITAKE Headquarters, All NORITAKE Manufacturing Bases,
HIROSHIMA KENMA K.K., NORITAKE RECYCLE CENTER, ZEN NORITAKE Headquarters



ISO certification acquisition status

ISO9001: NORITAKE SA (THAILAND), NORITAKE ABRASIVES (SUZHOU), SIAM COATED ABRASIVE, DIA RESIBON (THAILAND)
ISO14001: SIAM COATED ABRASIVE



NORITAKE CO., LIMITED

Grinding wheel, Dresser, Coolant

☐ Domestic Sales Locations

■ INDUSTRIAL PRODUCTS GROUP SALES DIVISION

3-1-36 Noritake-Shinmachi, Nishi-Ku, Nagoya 451-8501 Japan
Tel +81-52-561-9833

■ EASTERN JAPAN BRANCH

14-8 Fujimigaoka, Tsuzuki-ku, Yokohama, Kanagawa 224-0051 Japan
Tel +81-45-944-5929

■ CENTRAL JAPAN BRANCH

3-1-36 Noritake-Shinmachi, Nishi-Ku, Nagoya 451-8501 Japan
Tel +81-52-561-7226

■ WESTERN JAPAN BRANCH

2-29 Minamisenrioka, Settsu, Osaka 566-0021 Japan
Tel +81-6-6319-1161

■ OVERSEAS SALES DEPT.

3-1-36 Noritake-Shinmachi, Nishi-Ku, Nagoya 451-8501 Japan
Tel +81-52-561-9837

☐ Global Manufacturing and Sales Locations

■ NORITAKE CO., INC.

Cincinnati Branch

4990 Alliance Dr., Mason, OH 45040, U.S.A.
Tel +1-513-234-0770

Atlanta Branch

490 Sun Valley Dr., Suite#102
Roswell, GA 30076, U.S.A.
Tel +1-770-518-8233

■ NORITAKE EUROPA GmbH.

Kurhessenstrasse 3, D-64546
Mörfelden-Walldorf, Germany
Tel +49-61-05-2092-44

■ NORITAKE SHANGHAI TRADING CO., LTD.

Shanghai Headquarter

Room 701 Aetna Tower No.107, Zun Yi Road,
Chang Ning District, Shanghai, 200051, China
Tel +86-21-6237-5667

Guangzhou Branch

2510 Goldlion Digital Network Center, 138
Tiyu Road East, Guangzhou 510620, China
Tel +86-20-3877-2253

Dalian Branch

22K, International Finance Building,
No.15 Renmin Road Zhongshan
Dist Dalian 116001, China
Tel +86-411-825-06065

■ NORITAKE SA (THAILAND) CO., LTD.

Bangkok Office

388 Amigo Tower, 17th Floor, Zone A/1, Siphaya Road,
Mahapruetaram, Bangrak, Bangkok, 10500, Thailand
Tel +66-2-235-1688

Filtration

■ NORITAKE CO., LIMITED Fluid Technology Dept.

Filtration System Section

3-1-36 Noritake-Shinmachi, Nishi-Ku, Nagoya 451-8501 Japan
Tel +81-52-561-4268

Website ▶



Contact us ▶



Distributed by



The contents are subject to change without notice.

23070500SK